

## LAYOUT

**FLAG ALL SPRINKLER HEAD LOCATIONS. ADJUST LOCATION AND MAKE THE NECESSARY MODIFICATIONS TO NOZZLE TYPES ETC. AS REQUIRED TO INSURE 100% COVERAGE AND 50% OVERLAP.**

LOW ANGLE TRAJECTORY NOZZLES SHALL BE USED WHEN ALL SPRINKLERS AND ROTORS ARE LOCATED WITHIN 100' OF POOLS OR PUBLIC GATHERING AREAS.

PIPE

PIPE LOCATIONS SHOWN ON PLAN ARE SCHEMATIC ONLY AND SHALL BE ADJUSTED IN THE FIELD. WHEN LAYING-OUT MAINS AND LATERALS, LOCATE PIPE NEAR EDGES OF PAVEMENT OR AGAINST BUILDINGS WHEREVER POSSIBLE TO ALLOW SPACE FOR PLANT ROOT BALLS.

PIPING UNDER HARDSCAPES SUCH AS ROADS, WALKS, AND PATIOS ARE TO BE SLEEVED USING SCH. 40 PIPE.

PIPES 4" AND UNDER TO BE SOLVENT WELD. LARGER PIPES TO BE GASKETED 'O' RING PIPES AND USE THRUST BLOCKS OR MEGA LUGS AND DUCTILE IRON FITTINGS AT TURNING LOCATIONS.

**\*SIZE ALL PIPE SO NOT TO EXCEED 5' PER SECOND**

**\*INSTALL RAIN SENSOR AS PER LOCAL CODE**

PIPES CONVEYING RECLAIM WATER SHALL HAVE A 3' HORIZONTAL DISTANCE SEPARATION FROM OTHER PIPING OR UTILITY SERVICES. AN 18" VERTICAL SEPARATION SHALL BE MAINTAINED WHEN APPLICABLE.

**AIR RELEASE VALVES TO BE USED AT THE END OF ALL MAINLINE RUNS.**

**ALL PIPES TO BE IN ACCORDANCE WITH APPENDIX F OF THE 2017 FLORIDA BUILDING CODE.**

## WIRES

LOW VOLTAGE WIRE TO BE INSTALLED ALONG MAINLINE INSTALLATION. USE 2" SCH. 40 PVC WITH SWEEP ELBOWS AT TURNING LOCATIONS WHEN SLEEVING IS REQUIRED. ALL SPLICES SHALL BE ENCLOSED WITHIN A VALVE/SPLICE BOX.

**WIRE SIZED AND COLORED AS FOLLOWS:**

## #12 WHITE FOR COMMON

**#12 SPARE BLACK COMMON (1 SPARE NEEDED PER 10 HOT WIRES)**

## #14 RED HOT WIRES

**#14 SPARE YELLOW HOT WIRE (1 SPARES NEEDED PER 10 HOT WIRES, 3 SPARE MINIMUM)**

WHEN WIRE RUNS EXCEEDS 3,500 LINEAR FEET, USE #10 FOR COMMON WIRES AND #12 FOR HOT/SPARE WIRES.

ALL IRRIGATION CONTROLLERS TO BE PROPERLY GROUNDED IN ACCORDANCE WITH MANUFACTURE'S RECOMMENDATIONS.

## FLUSHING

**PRIOR TO PLACEMENT OF HEADS FLUSH ALL LINES UNTIL LINES ARE COMPLETELY CLEAN OF DEBRIS.**


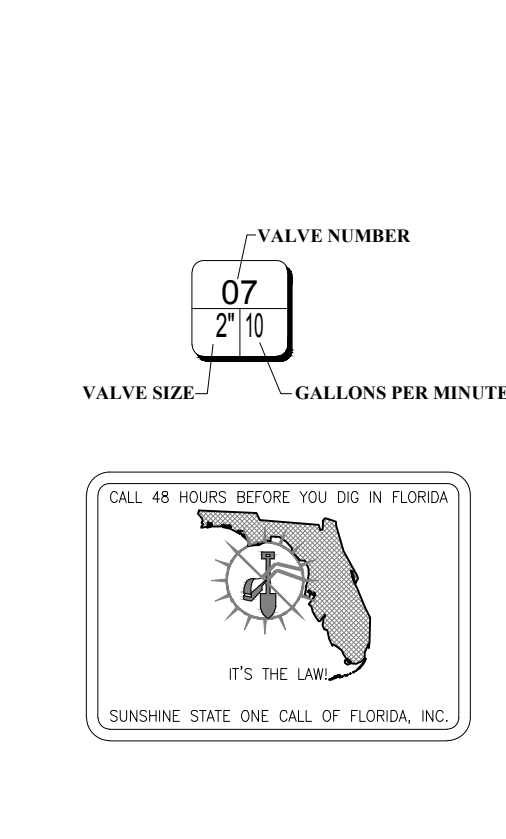
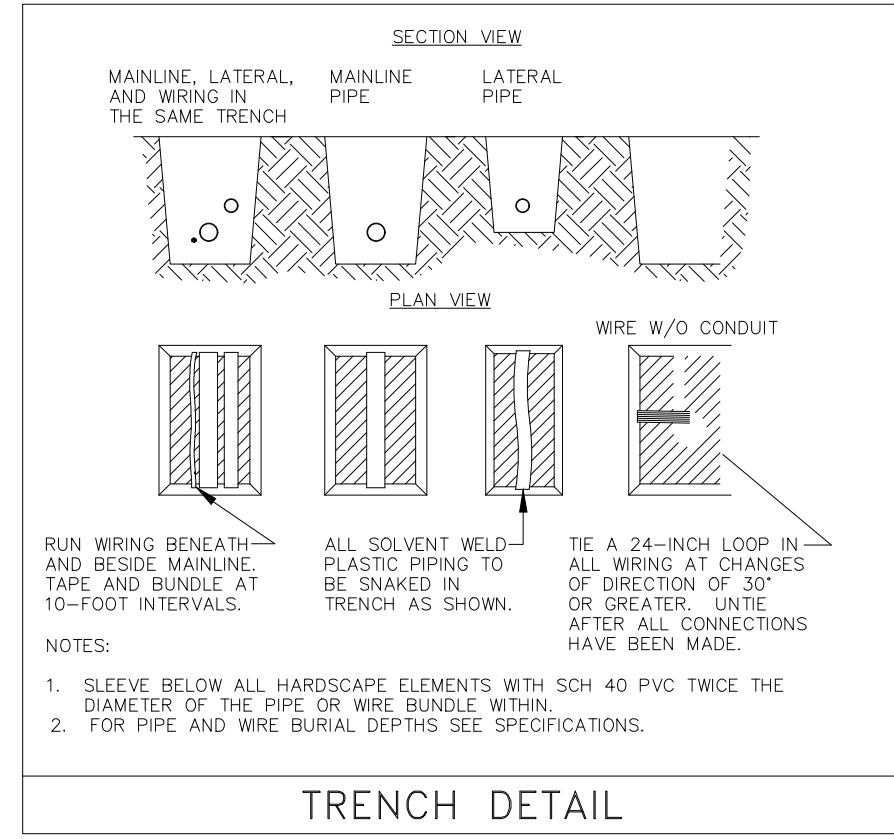
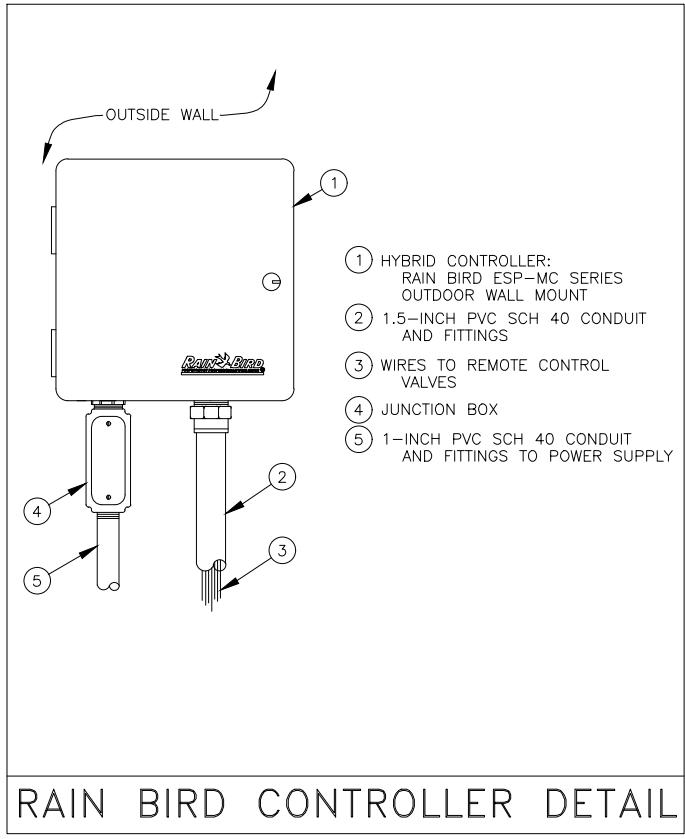
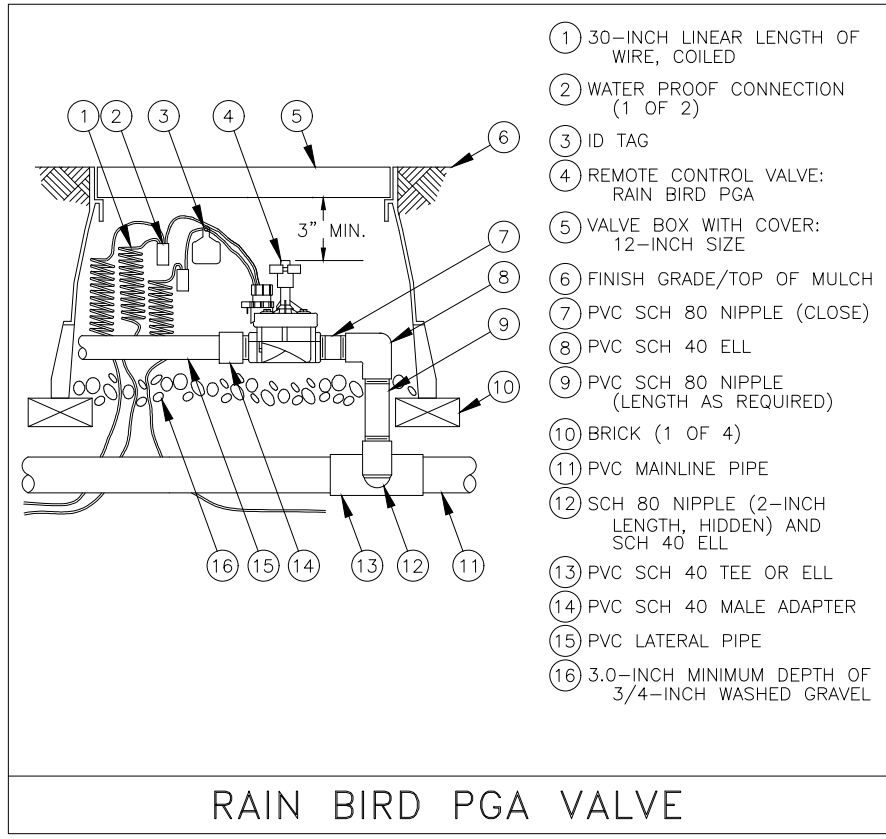
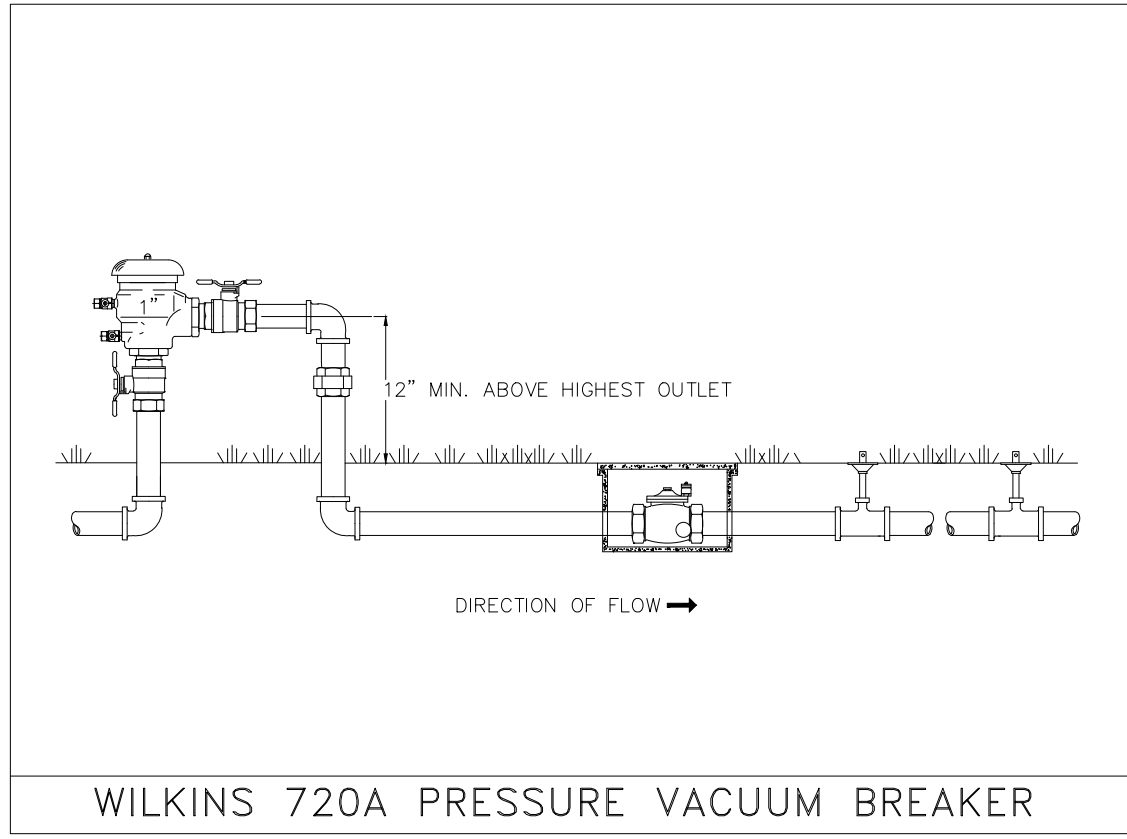
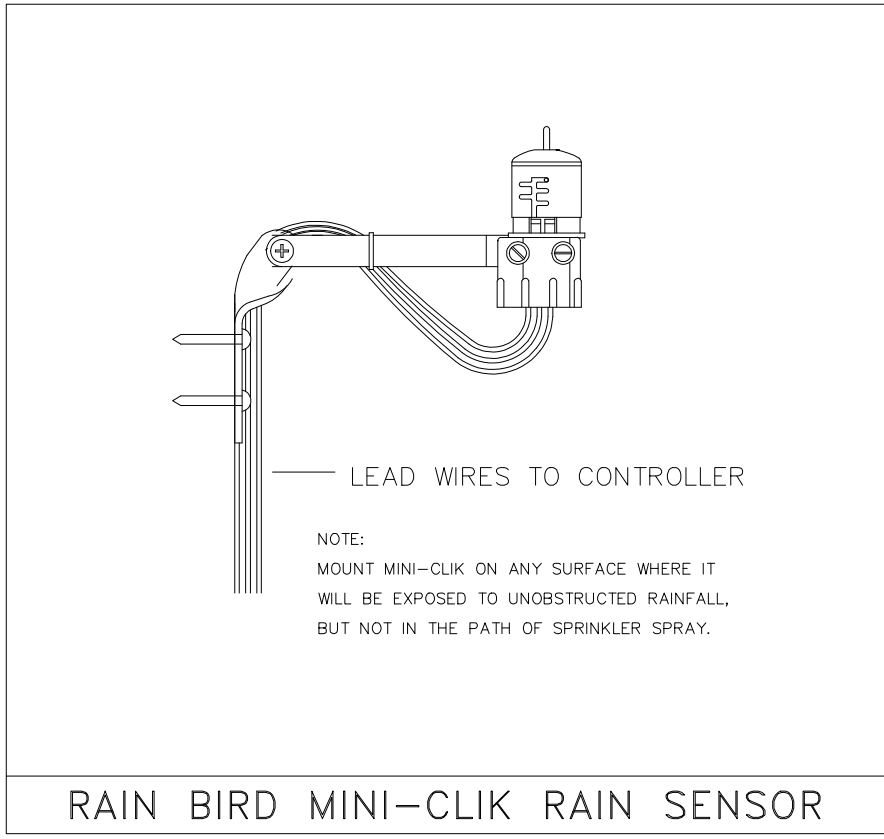
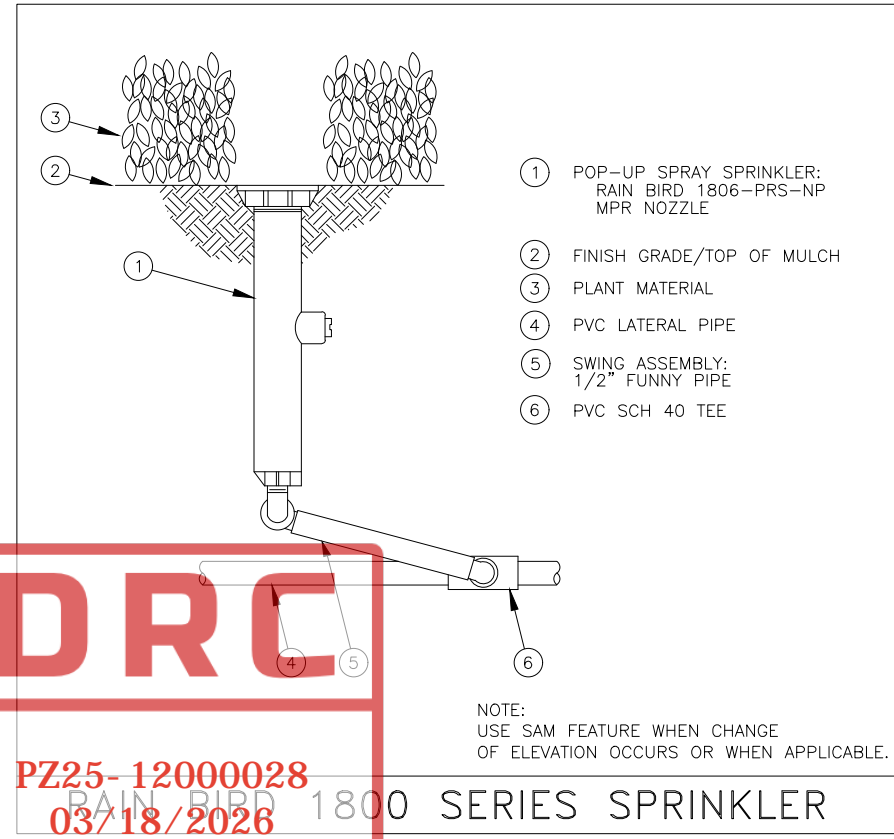
## TRENCHING

**TRENCH BOTTOM TO BE UNIFORM AND FREE OF DEBRIS. NATIVE EXCAVATED MATERIAL USED TO BACKFILL TRENCH SHALL BE FREE FROM ROCKS OR STONES LARGER THAN 1" IN DIAMETER.**

MISC.

**PRESSURE TEST MAINLINE AS PER FLORIDA BUILDING CODE. INSTALL IRRIGATION SYSTEM AS PER LATEST EDITION OF THE FLORIDA BUILDING CODE, APPENDIX F., AND ALL PERTINENT LOCAL CODES.**

**SPRAY HEADS INSTALLED IN SHRUB AREAS TO BE 12 INCH POP-UPS OR INSTALLED ON RISERS.**



**WITKIN HULTS  
+ PARTNERS**

307 south 21st avenue hollywood, florida  
 phone: 954-923-9881 facsimile: 954-923-9889  
[www.witkindesign.com](http://www.witkindesign.com)

©2020 WITKIN HULTS + PARTNERS  
 THE DESIGN AND DRAWINGS HEREIN ARE THE  
 INTELLECTUAL PROPERTY OF THE  
 LANDSCAPE ARCHITECT AND ARE PROTECTED  
 UNDER THE COPYRIGHT PROTECTION ACT

Project: MODERA POMPANO BEACH  
POMPANO BEACH, FLORIDA  
IRRIGATION DETAILS

[illegible]

Seal:

Lic. # LA6667290  
Member: A.S.L.A.

Drawing: Irrigation Details

Date: 08/29/2025

Scale: See Left

Drawn by: GM

Sheet No.:

IR-2

Cad Id.: 2025-042